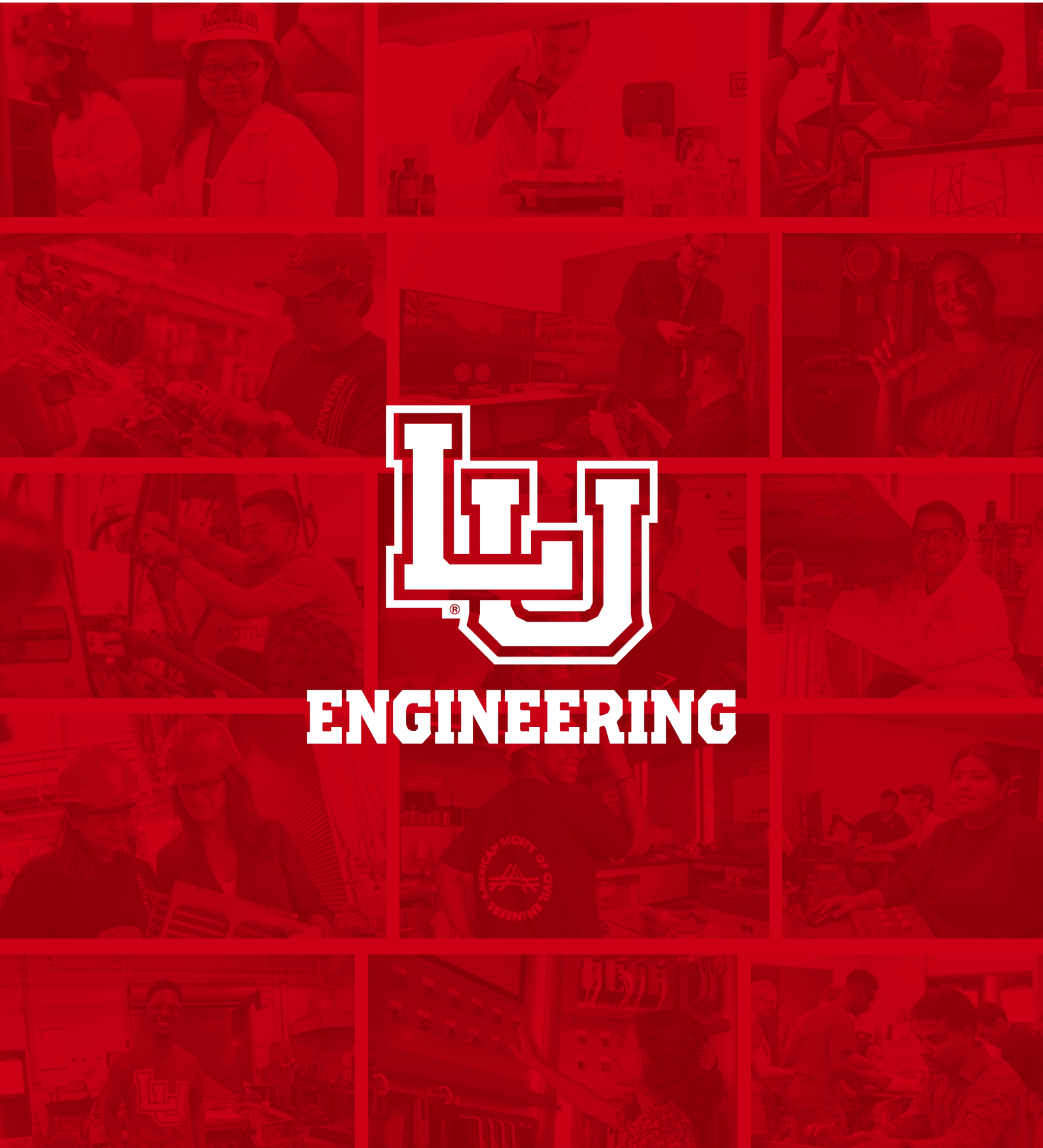


SPRING 2025 | ENGINEERING CAREER FAIR



ENGINEERING

STUDENT ATTENDEE PACKET

Brought to you by
The Student Engineering Council

Tuesday, February 4, 2025

**Sheila Umphrey Recreational Sports Center
Main Gym**

4405 Jimmy Simmons Blvd
Beaumont, TX 77705

Karli Padia • Director of Operations • karli.padia@lamar.edu • O: 409-880-8426
Engineering Office of Outreach & Student Services • O: 409-880-8714

SCHEDULE OF EVENTS

12:00 PM – 1:00 PM

ENGINEERING CAREER FAIR SENIOR HOUR

Only students of senior level will be allowed entrance.

1:00 PM – 3:00 PM

ENGINEERING CAREER FAIR GENERAL ADMISSIONS

3:00 PM

ENGINEERING CAREER FAIR CONCLUDES

STUDENT PARTICIPANT INFORMATION

The Engineering Career Fair serves as a formal career opportunity exclusively for students majoring in the College of Engineering.

Invitations to this esteemed event will be extended to students who meet the specified criteria, including:

- 30+ Credit Hours Completed
- GPA of 2.8 or Higher
- Currently Seeking a Bachelor's Degree within the COE
- Calculus I Complete OR in Calculus I Spring 2025
- Physics I Complete OR in Physics I Spring 2025
- LU Transfers Without a GPA May Contact the COE for approval

HOW TO PREPARE

DRESS ATTIRE—Business Professional

Event staff has the right to reject entrance for anyone not in appropriate dress code.

Need help with your attire? There are several options to help you out!

JCPenny Suit-Up Event on January 31st - Recieve up to 45% off career dress apparel, accessories, and shoes.

Cardinal Career Closet located in Galloway 103 and managed by the Center for Career and Professional Development

BRING—Printed Resumes

RESEARCH—Do your research on the companies that are attending.

- *What type of company they are*
- *What type of majors they are seeking to hire*
- *Who do you wish to visit with*
- *What is their booth location*

INTRODUCTION—Have your elevator pitch ready. Practice it until it is natural to you. As the student, you should begin the conversation.

DO NOT—It is not the time and place to ask questions such as...

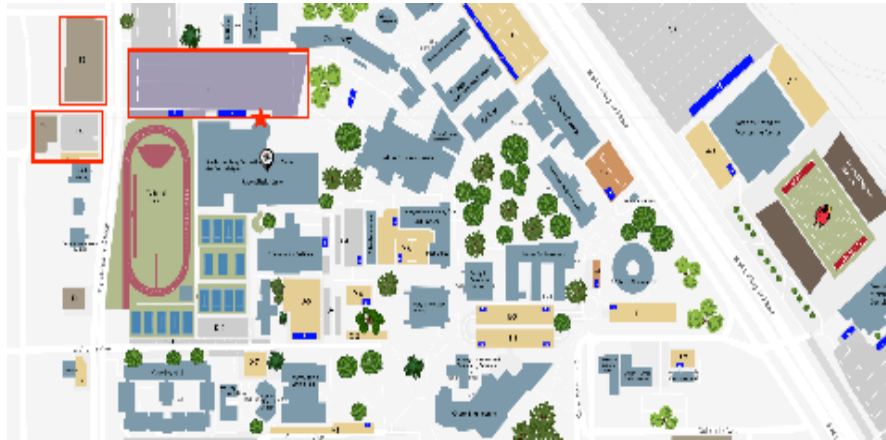
- *Pay, leave, vacation, remote work, etc.*

PLEASE NOTE

Please be aware that this semesters event will be held in the Recreational Sports Center

You can access the campus map through [this link.](#)

Additionally, I've included a screenshot with a marker pinpointing the Recreational Sports Center for your reference.



When you arrive, a member of the event staff stationed at the check-in tables will request your first and last name. To gain access to the event, it is essential that you have registered on Handshake, completed the check-in process, and have a name tag on.

After completing the check-in process, you will be guided to the name tag area. If you registered prior to noon on 01/31/25, you will receive a pre-printed name tag. If you do not possess a pre-printed name tag, you will be required to provide evidence (received at check-in) of your registration in order to receive a handwritten one. It is imperative to have a name tag on in order to gain access to the Main Gym.

Before next Tuesday's event, we kindly ask that you take some time to acquaint yourself with the layout of the venue. You'll easily spot individuals wearing *red LU Engineering polos*, and they will be more than happy to assist you at any point throughout the day.

REMEMBER

**You are deserving of this opportunity!
Take a deep breath, lift your head high, and be confident!**

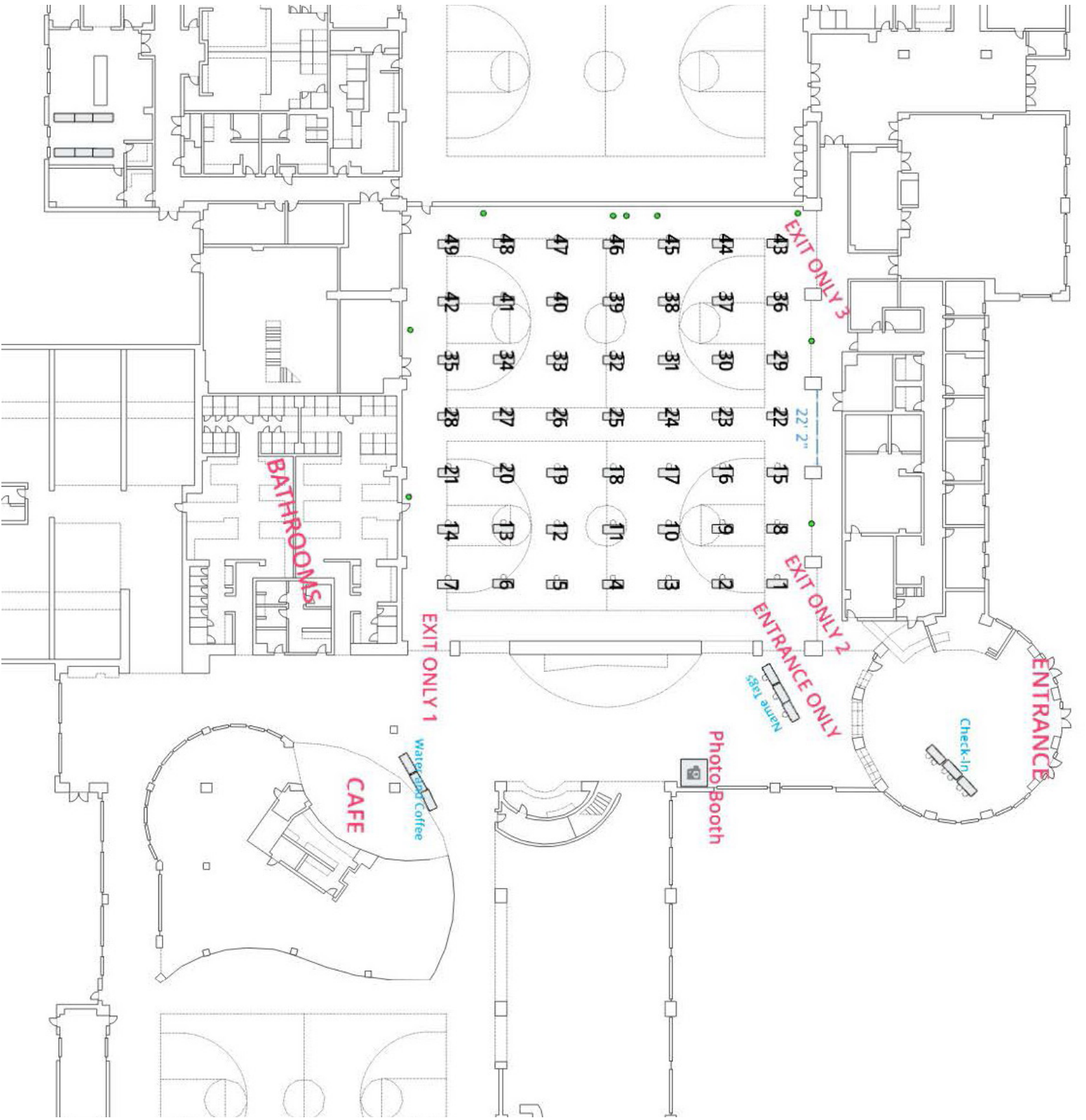


TABLE	EMPLOYER	EMPLOYER INDUSTRY
8	Anchor QEA, LLC	Environmental Services
30	BASF	Other Industries
38	Brask, Inc. - IEE	Manufacturing
47	Brockette/Davis/Drake, Inc.	Civil Engineering
24	CDI Engineering Solutions, LLC	Engineering & Construction
42	CenterPoint Energy	Utilities and Renewable Energy
32	Champion Technology Services, Inc.	Engineering & Construction
26	City of Beaumont	Government - Local, State & Federal
31	Clean Harbors	Environmental Services
39	Collins Engineers, Inc.	Civil Engineering
17	Crest Industries	Utilities and Renewable Energy
13	Dashiell Corporation	Engineering & Construction
45	Dow	Manufacturing
29	Emerson	Manufacturing
19	Entergy	Utilities and Renewable Energy
34	FieldCore	Utilities and Renewable Energy
1	Harris County Flood Control District	Government - Local, State & Federal
21	Indorama Ventures - Indovinya	Manufacturing
36	John Crane	Manufacturing
40	KenMor Electric Company	Engineering & Construction
46	M&S Engineering, LLC	Engineering & Construction

TABLE	EMPLOYER	EMPLOYER INDUSTRY
16	OCI Beaumont	Manufacturing
28	Odin Environmental Solutions, LLC	Construction
5	Orion Marine Group	Construction
15	Primoris Service Corporation	Construction
14	Ragle Inc	Civil Engineering
9	ReCon Management Services, Inc.	Management Consulting
35	Richard Design Services	Engineering & Construction
18	Saber Power Services	Utilities and Renewable Energy
3	Sam Houston Electric Cooperative, Inc.	Utilities and Renewable Energy
12	SAMSON Controls, Inc.	Manufacturing
4	Scallon Controls, Inc.	Other Industries
37	Schaumburg & Polk, Inc.	Civil Engineering
23	SI Group, Inc.	Manufacturing
11	Smurfit Westrock	Manufacturing
25	Sulzer	Manufacturing
7	Terracon	Civil Engineering
6	Texas Department of Transportation	Transportation & Logistics
33	TLV CORPORATION	Other Industries
27	Tolunay-Wong Engineers, Inc.	Civil Engineering
44	U.S. Navy	Government - Local, State & Federal
22	Valero	Oil & Gas
10	Venture Global LNG, Inc.	Oil & Gas
2	Veolia Water Technologies & Solutions	Environmental Services
20	Vogler & Spencer Engineering, Inc.	Civil Engineering
43	Wood	Oil & Gas
41	Zeeco, Inc.	Environmental Services



COLLEGE OF ENGINEERING
LAMAR UNIVERSITY